

SPECIFICATIONS:

Circuit breaker	NSX160S DC, 3P with TMD trip unit
Maximum configuration	4 hour runtime
Battery Type	Lead-acid
Maximum short circuit level (kA)	10

NOTES:

1. INSTALLATION SHALL COMPLY WITH ALL APPLICABLE NATIONAL, STATE AND LOCAL ELECTRICAL REGULATIONS.
2. REFER TO PRODUCT DOCUMENTATION FOR ADDITIONAL DETAILS PRIOR TO INSTALLATION AND SITE PREPARATION WORK.

THIS DRAWING AND SPECIFICATIONS HEREIN ARE THE PROPERTY OF SCHNEIDER ELECTRIC AND SHALL NOT BE COPIED, REPRODUCED OR USED IN WHOLE OR IN PART, AS THE BASIS FOR THE MANUFACTURE OR SALE OF ITEMS WITHOUT WRITTEN PERMISSION FROM SCHNEIDER ELECTRIC. THIS DRAWING IS BASED UPON LATEST AVAILABLE INFORMATION AND IS SUBJECT TO CHANGE WITHOUT NOTICE.

Schneider
Electric

TITLE: EASY UPS 3S / EASY UPS 3S PRO
BATTERY BREAKER BOX
ISOMETRIC VIEW

PROJECT: SUBMITTAL DRAWINGS | SHEET 1 OF 4

DWG NO: E3SOPT007

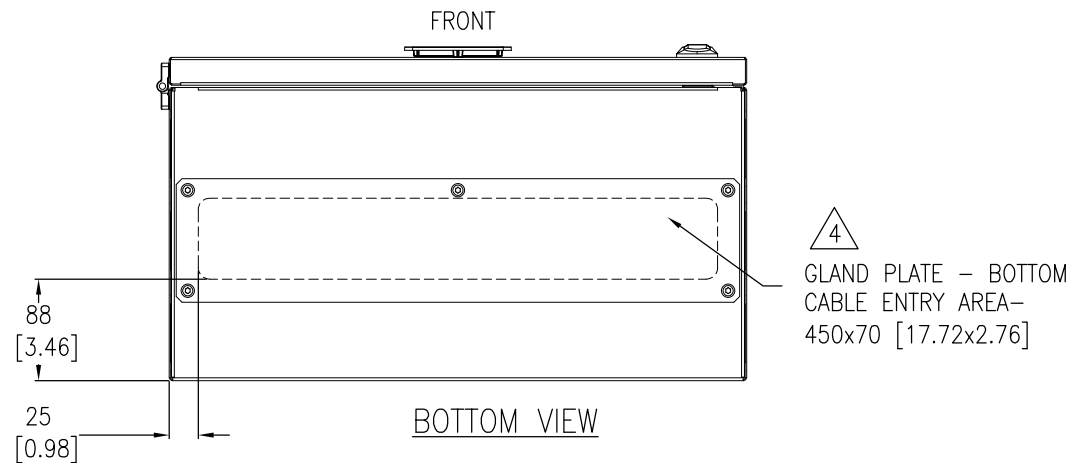
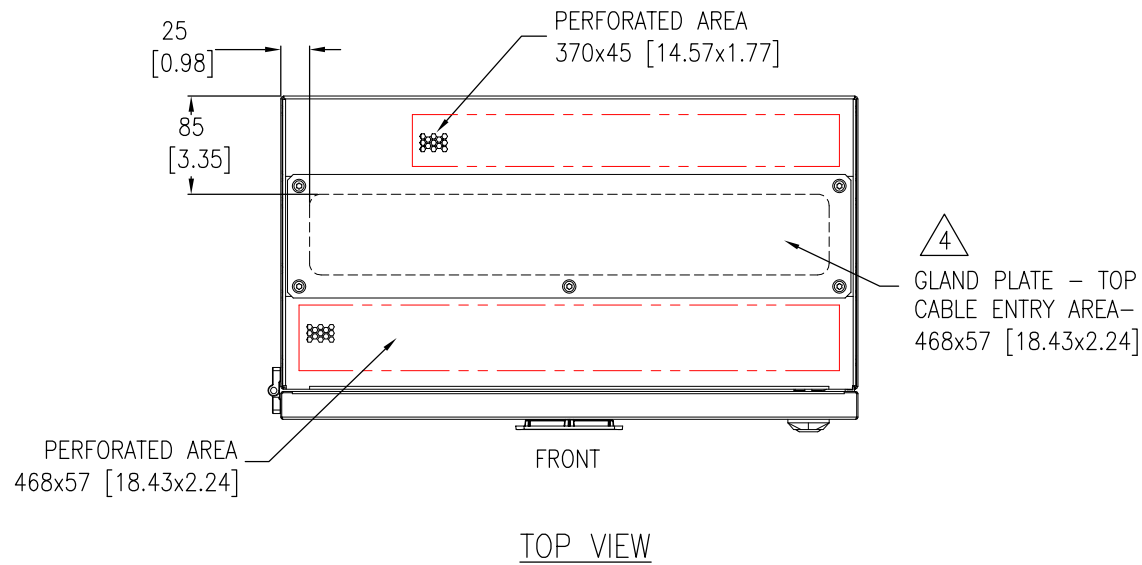
DRAWN: AKSHAY/JAYAPRAKASH 22-NOV-25

ENGINEER: YaPING 22-NOV-25

APPROVED: DAVE DONG 22-NOV-25

REV. 1

FIRST
ANGLE
PROJECTION



NOTES:

1. INSTALLATION SHALL COMPLY WITH ALL APPLICABLE NATIONAL, STATE AND LOCAL ELECTRICAL REGULATIONS.
2. REFER TO PRODUCT DOCUMENTATION FOR ADDITIONAL DETAILS PRIOR TO INSTALLATION AND SITE PREPARATION WORK.
3. ALL DIMENSIONS ARE IN MILLIMETERS [INCHES].
- △ 4. DRILL/PUNCH HOLES IN PLATE. REMOVE PLATE FROM CABINET BEFORE DRILLING/PUNCHING.
USE APPROPRIATE CABLE PROTECTION AROUND HOLE BEFORE CABLING IS INSTALLED.

THIS DRAWING AND SPECIFICATIONS HEREIN ARE THE PROPERTY OF SCHNEIDER ELECTRIC AND SHALL NOT BE COPIED, REPRODUCED OR USED IN WHOLE OR IN PART, AS THE BASIS FOR THE MANUFACTURE OR SALE OF ITEMS WITHOUT WRITTEN PERMISSION FROM SCHNEIDER ELECTRIC. THIS DRAWING IS BASED UPON LATEST AVAILABLE INFORMATION AND IS SUBJECT TO CHANGE WITHOUT NOTICE.

**Schneider
Electric**

TITLE: EASY UPS 3S / EASY UPS 3S PRO
BATTERY BREAKER BOX
TOP AND BOTTOM VIEWS

PROJECT: SUBMITTAL DRAWINGS SHEET 3 OF 4

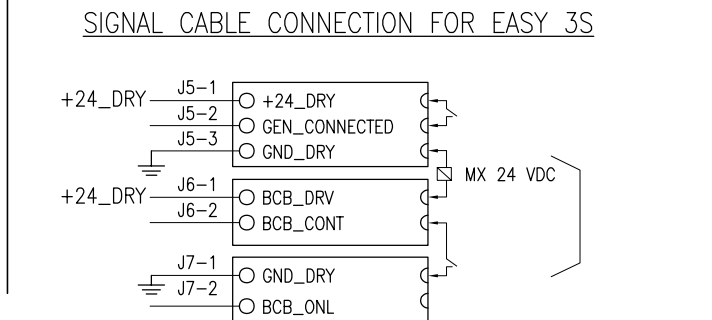
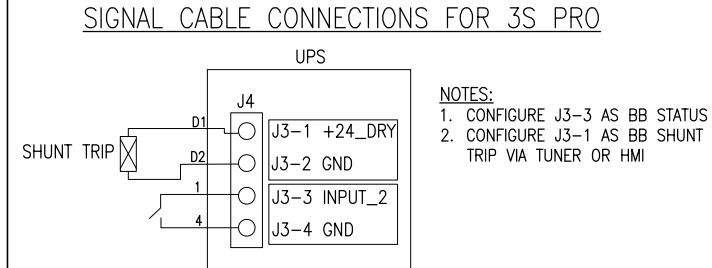
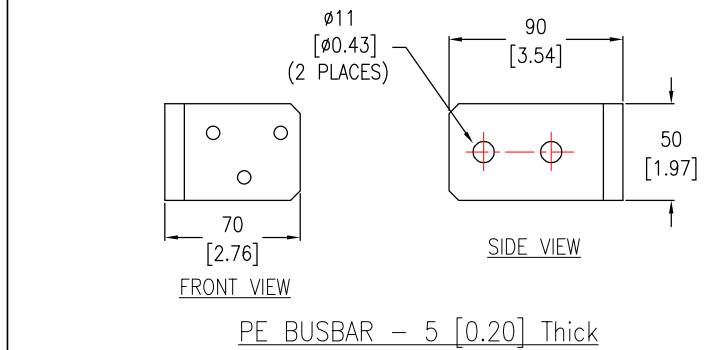
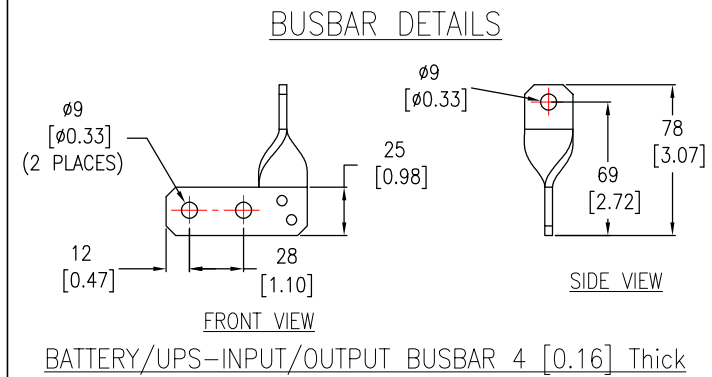
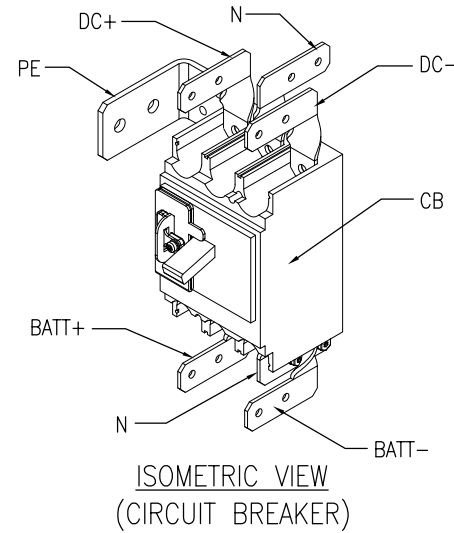
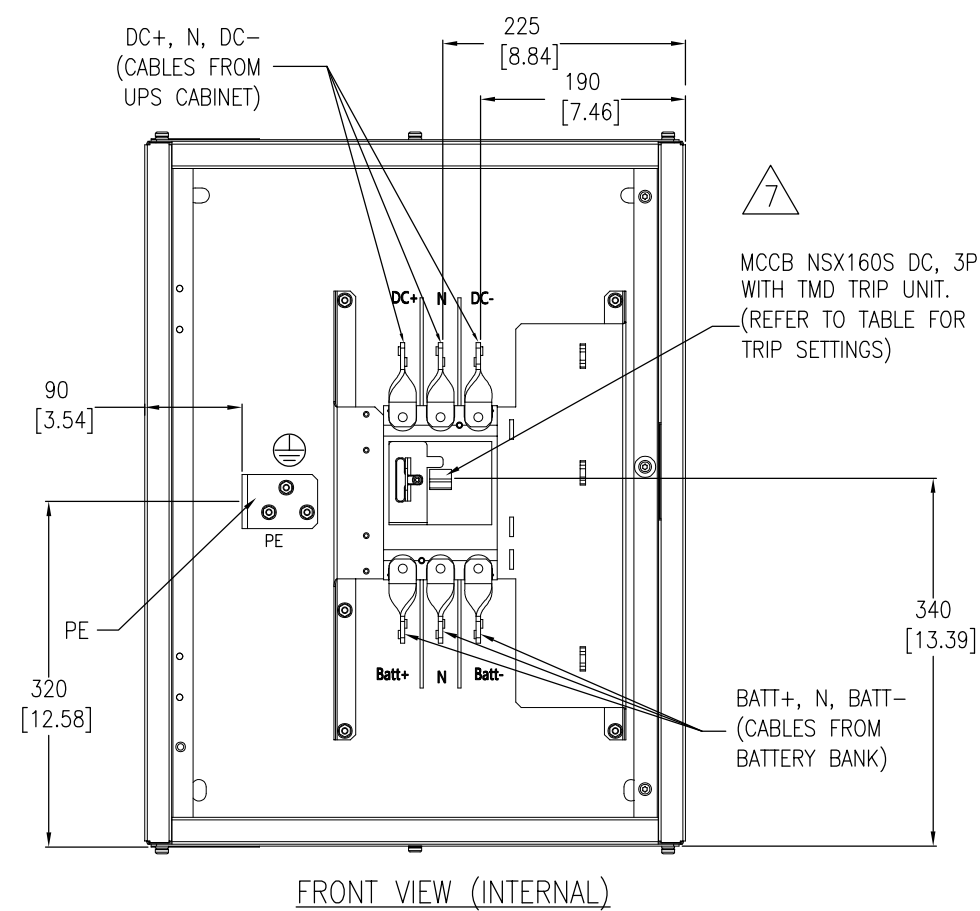
DWG NO: E3SOPT007

DRAWN: AKSHAY/JAYAPRAKASH 22-NOV-25
ENGINEER: YaPING 22-NOV-25

APPROVED: DAVE DONG 22-NOV-25

REV. 1

FIRST
ANGLE
PROJECTION



UPS Rating (kW)	Trip Setting (A)	
	I _r	I _m
10	112	1250 (fixed)
15	112	
20	112	
30	112	
40	144	



EASY UPS 3S

Recommended Cable Sizes		10kW	15kW	20kW	30kW	40kW
Copper	Battery +/- (mm ²)	8mm ²	8mm ²	25mm ²	25mm ²	35mm ²
	Battery PE (mm ²)	6mm ²	6mm ²	10mm ²	16mm ²	16mm ²



EASY UPS 3S PRO

Recommended Cable Sizes		10/15/20/30kW	40kW
Copper	Battery +/- (mm ²)	25mm ²	35mm ²
	Battery PE (mm ²)	16mm ²	16mm ²

- NOTES:
1. INSTALLATION SHALL COMPLY WITH ALL APPLICABLE NATIONAL, STATE AND LOCAL ELECTRICAL REGULATIONS.
 2. REFER TO PRODUCT DOCUMENTATION FOR ADDITIONAL DETAILS PRIOR TO INSTALLATION AND SITE PREPARATION WORK.
 3. ALL DIMENSIONS ARE IN MILLIMETERS [INCHES].
 4. CABLE SIZES ARE BASED ON TABLE B.5.2.5 OF IEC 60364-5-52 WITH THE FOLLOWING ASSERTIONS:
 - a) 90°C CONDUCTORS.
 - b) AN AMBIENT TEMPERATURE OF 30°C [86°F].
 - c) USE OF COPPER CONDUCTORS.
 - d) INSTALLATION METHOD 'C'
 IF THE AMBIENT TEMPERATURE IS GREATER THAN 30°C [86°F], LARGER CONDUCTORS ARE TO BE SELECTED IN ACCORDANCE WITH THE CORRECTION FACTORS OF THE IEC.
 5. SOME STRUCTURAL DETAILS HAVE BEEN OMITTED FOR THE PURPOSE OF CLARITY.

THIS DRAWING AND SPECIFICATIONS HEREIN ARE THE PROPERTY OF SCHNEIDER ELECTRIC AND SHALL NOT BE COPIED, REPRODUCED OR USED IN WHOLE OR IN PART, AS THE BASIS FOR THE MANUFACTURE OR SALE OF ITEMS WITHOUT WRITTEN PERMISSION FROM SCHNEIDER ELECTRIC. THIS DRAWING IS BASED UPON LATEST AVAILABLE INFORMATION AND IS SUBJECT TO CHANGE WITHOUT NOTICE.

Schneider Electric

TITLE: EASY UPS 3S / EASY UPS 3S PRO
BATTERY BREAKER BOX
INTERNAL VIEW, BUSBARS & INTERFACE DETAILS

PROJECT: SUBMITTAL DRAWINGS SHEET 4 OF 4

DWG NO: E3SOPT007

DRAWN: AKSHAY/JAYAPRAKASH

ENGINEER: YaPING

APPROVED: DAVE DONG

REV: 1

22-NOV-25

22-NOV-25

22-NOV-25

FIRST ANGLE PROJECTION